

Pier Point 1

RASHID YACHTS & MARINA

FLOOR PLAN



EMAAR

Pier Point 1

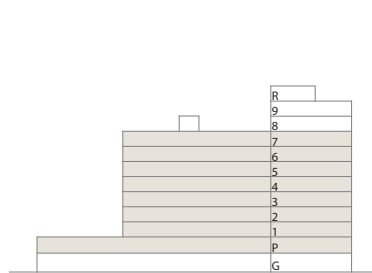
RASHID YACHTS & MARINA

1 BEDROOM

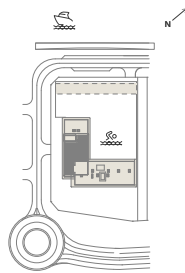
TYPE A.1
UNITS P07, 110, 210-710

SUITE AREA	736.47 SQ.FT	68.42 SQ.M
BALCONY AREA	73.95 SQ.FT	6.87 SQ.M
TOTAL AREA	810.41 SQ.FT	75.29 SQ.M

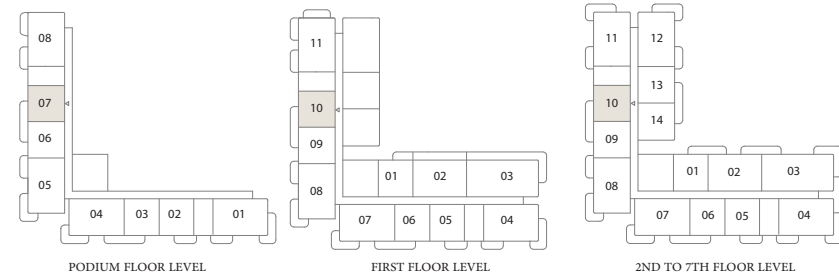
KEY SECTION



LAYOUT



KEY PLAN



FLOOR PLAN 1. All dimensions are in imperial and metric, and measured from finish to finish excluding construction tolerances. 2. All materials, dimensions, and drawings are approximate only. 3. Information is subject to change without notice, at developer's absolute discretion. 4. Actual area may vary from the stated area. 5. Drawings not to scale. 6. All images used are for illustrative purposes only and do not represent the actual size, features, specifications, fittings, and furnishings. 7. The developer reserves the right to make revisions / alterations, at it's absolute discretion, without any liability whatsoever.

Pier Point 1

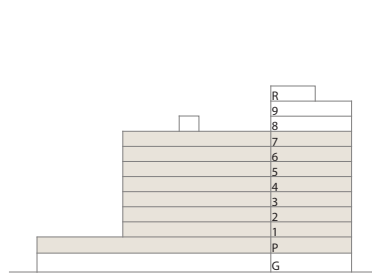
RASHID YACHTS & MARINA

1 BEDROOM

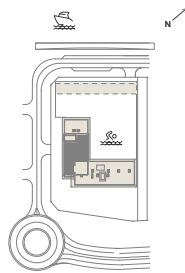
TYPE A.2
UNITS P06, 109, 209-709

SUITE AREA	727.64 SQ.FT	67.6 SQ.M
BALCONY AREA	73.95 SQ.FT	6.87 SQ.M
TOTAL AREA	801.59 SQ.FT	74.47 SQ.M

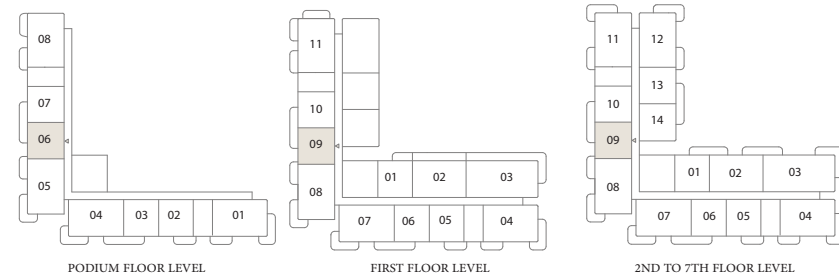
KEY SECTION



LAYOUT



KEY PLAN



FLOOR PLAN 1. All dimensions are in imperial and metric, and measured from finish to finish excluding construction tolerances. 2. All materials, dimensions, and drawings are approximate only. 3. Information is subject to change without notice, at developer's absolute discretion. 4. Actual area may vary from the stated area. 5. Drawings not to scale. 6. All images used are for illustrative purposes only and do not represent the actual size, features, specifications, fittings, and furnishings. 7. The developer reserves the right to make revisions / alterations, at it's absolute discretion, without any liability whatsoever.

Pier Point 1

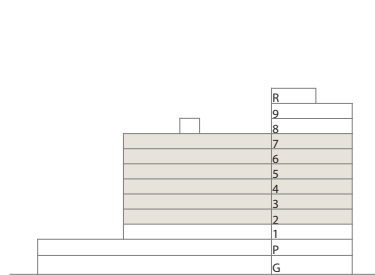
RASHID YACHTS & MARINA

1 BEDROOM

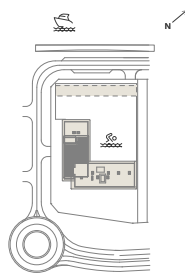
TYPE A.3
UNITS 214-714

SUITE AREA	729.69 SQ.FT	67.79 SQ.M
BALCONY AREA	73.95 SQ.FT	6.87 SQ.M
TOTAL AREA	803.63 SQ.FT	74.66 SQ.M

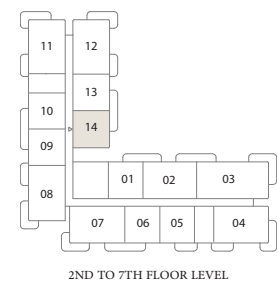
KEY SECTION



LAYOUT



KEY PLAN



FLOOR PLAN 1. All dimensions are in imperial and metric, and measured from finish to finish excluding construction tolerances. 2. All materials, dimensions, and drawings are approximate only. 3. Information is subject to change without notice, at developer's absolute discretion. 4. Actual area may vary from the stated area. 5. Drawings not to scale. 6. All images used are for illustrative purposes only and do not represent the actual size, features, specifications, fittings, and furnishings. 7. The developer reserves the right to make revisions / alterations, at it's absolute discretion, without any liability whatsoever.

Pier Point 1

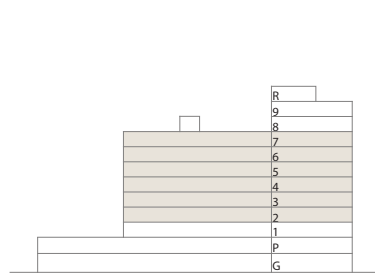
RASHID YACHTS & MARINA

1 BEDROOM

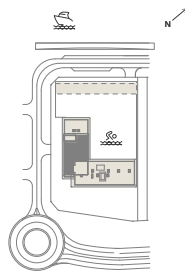
TYPE A.4
UNITS 213-713

SUITE AREA	729.69 SQ.FT	67.79 SQ.M
BALCONY AREA	73.95 SQ.FT	6.87 SQ.M
TOTAL AREA	803.63 SQ.FT	74.66 SQ.M

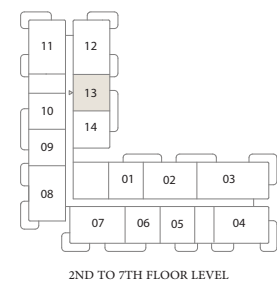
KEY SECTION



LAYOUT



KEY PLAN



FLOOR PLAN 1. All dimensions are in imperial and metric, and measured from finish to finish excluding construction tolerances. 2. All materials, dimensions, and drawings are approximate only. 3. Information is subject to change without notice, at developer's absolute discretion. 4. Actual area may vary from the stated area. 5. Drawings not to scale. 6. All images used are for illustrative purposes only and do not represent the actual size, features, specifications, fittings, and furnishings. 7. The developer reserves the right to make revisions / alterations, at it's absolute discretion, without any liability whatsoever.

Pier Point 1

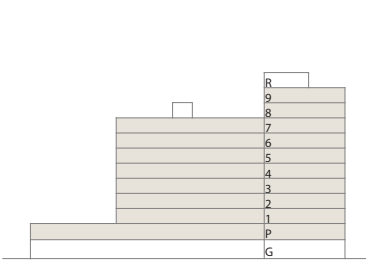
RASHID YACHTS & MARINA

1 BEDROOM

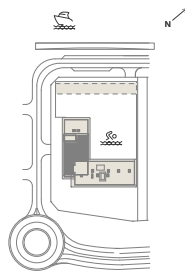
TYPE B.1
UNITS P03, 106, 206-706, 806-906

SUITE AREA	698.9-699.33 SQ.FT	64.93-64.97 SQ.M
BALCONY AREA	74.59-74.81 SQ.FT	6.93-6.95 SQ.M
TOTAL AREA	773.71-773.93 SQ.FT	71.88-71.90 SQ.M

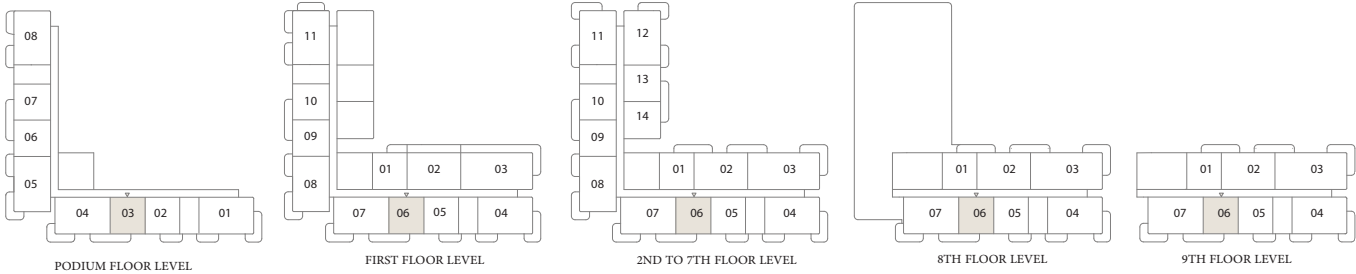
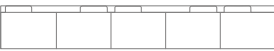
KEY SECTION



LAYOUT



KEY PLAN



FLOOR PLAN 1. All dimensions are in imperial and metric, and measured from finish to finish excluding construction tolerances. 2. All materials, dimensions, and drawings are approximate only. 3. Information is subject to change without notice, at developer's absolute discretion. 4. Actual area may vary from the stated area. 5. Drawings not to scale. 6. All images used are for illustrative purposes only and do not represent the actual size, features, specifications, fittings, and furnishings. 7. The developer reserves the right to make revisions / alterations, at it's absolute discretion, without any liability whatsoever.

Pier Point 1

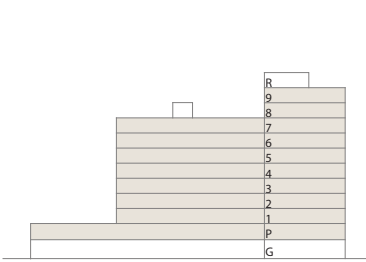
RASHID YACHTS & MARINA

1 BEDROOM

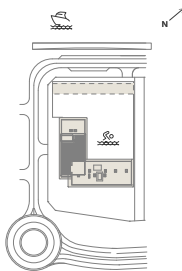
TYPE B.2
UNITS P02, 105, 205-705, 805-905

SUITE AREA	707.08-707.51 SQ.FT	65.69-65.73 SQ.M
BALCONY AREA	72.44-72.76 SQ.FT	6.73-6.76 SQ.M
TOTAL AREA	779.85-779.95 SQ.FT	72.45-72.46 SQ.M

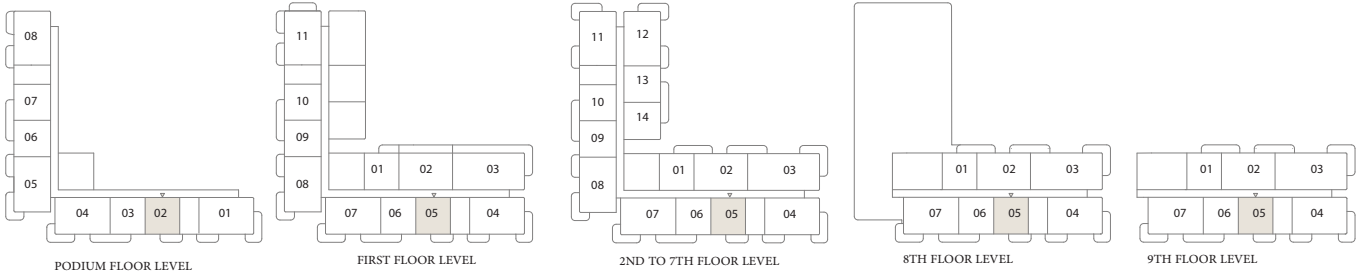
KEY SECTION



LAYOUT



KEY PLAN



FLOOR PLAN 1. All dimensions are in imperial and metric, and measured from finish to finish excluding construction tolerances. 2. All materials, dimensions, and drawings are approximate only. 3. Information is subject to change without notice, at developer's absolute discretion. 4. Actual area may vary from the stated area. 5. Drawings not to scale. 6. All images used are for illustrative purposes only and do not represent the actual size, features, specifications, fittings, and furnishings. 7. The developer reserves the right to make revisions / alterations, at it's absolute discretion, without any liability whatsoever.

Pier Point 1

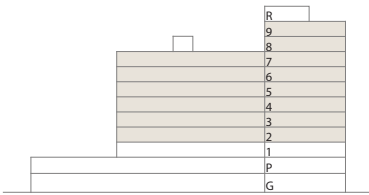
RASHID YACHTS & MARINA

1 BEDROOM

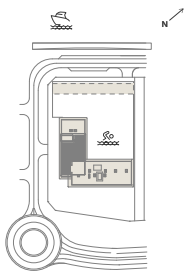
TYPE B.3
UNITS 201-701, 801-901

SUITE AREA	706.87-707.4 SQ.FT	65.67-65.72 SQ.M
BALCONY AREA	72.23-72.33 SQ.FT	6.71-6.72 SQ.M
TOTAL AREA	779.09-779.74 SQ.FT	72.38-72.44 SQ.M

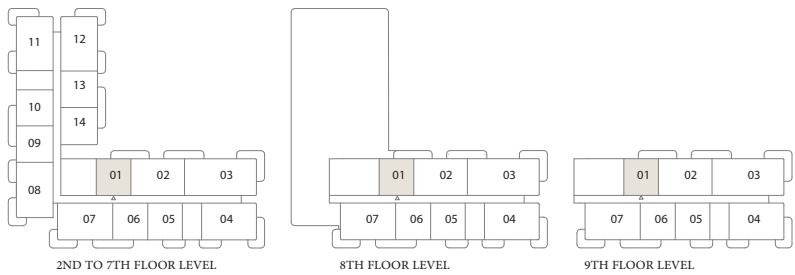
KEY SECTION



LAYOUT



KEY PLAN



FLOOR PLAN 1. All dimensions are in imperial and metric, and measured from finish to finish excluding construction tolerances. 2. All materials, dimensions, and drawings are approximate only. 3. Information is subject to change without notice, at developer's absolute discretion. 4. Actual area may vary from the stated area. 5. Drawings not to scale. 6. All images used are for illustrative purposes only and do not represent the actual size, features, specifications, fittings, and furnishings. 7. The developer reserves the right to make revisions / alterations, at it's absolute discretion, without any liability whatsoever.

Pier Point 1

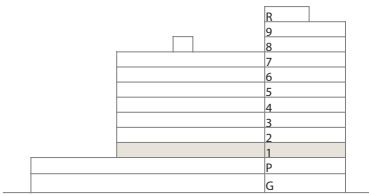
RASHID YACHTS & MARINA

1 BEDROOM

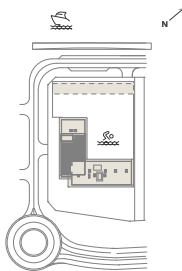
TYPE B.4
UNIT 101

SUITE AREA	706.87 SQ.FT	65.67 SQ.M
BALCONY AREA	92.35 SQ.FT	8.58 SQ.M
TOTAL AREA	799.22 SQ.FT	74.25 SQ.M

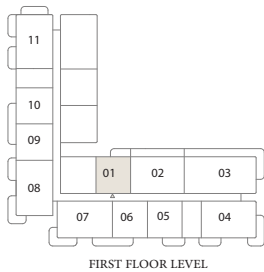
KEY SECTION



LAYOUT



KEY PLAN



Pier Point 1

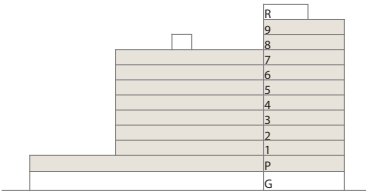
RASHID YACHTS & MARINA

2 BEDROOM

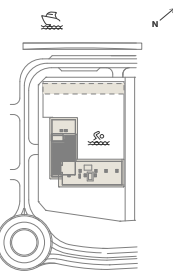
TYPE A.1
UNITS P01, 104, 204-704, 804-904

SUITE AREA	1090.71-1091.46 SQ.FT	101.33-101.40 SQ.M
BALCONY AREA	201.18-201.5 SQ.FT	18.69-18.72 SQ.M
TOTAL AREA	1292.21-1292.64 SQ.FT	120.05 -120.09 SQ.M

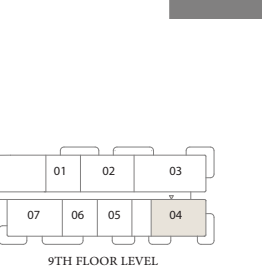
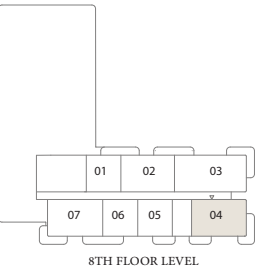
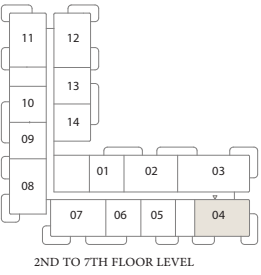
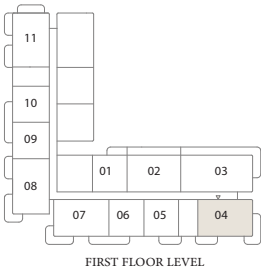
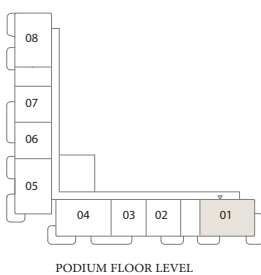
KEY SECTION



LAYOUT



KEY PLAN



Pier Point 1

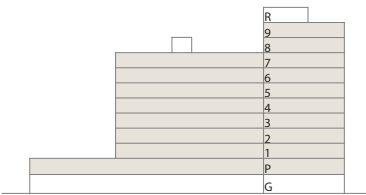
RASHID YACHTS & MARINA

2 BEDROOM

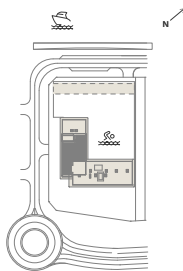
TYPE A.2
UNITS P04, 107, 207-707, 807-907

SUITE AREA	1085.54-1086.29 SQ.FT	100.85-100.92 SQ.M
BALCONY AREA	198.70-199.24 SQ.FT	18.46-18.51 SQ.M
TOTAL AREA	1284.78-1285 SQ.FT	119.36-119.38 SQ.M

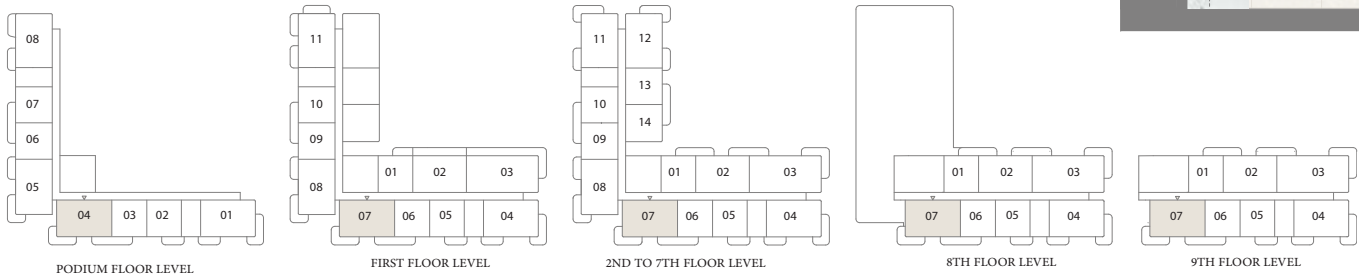
KEY SECTION



LAYOUT



KEY PLAN



FLOOR PLAN 1. All dimensions are in imperial and metric, and measured from finish to finish excluding construction tolerances. 2. All materials, dimensions, and drawings are approximate only. 3. Information is subject to change without notice, at developer's absolute discretion. 4. Actual area may vary from the stated area. 5. Drawings not to scale. 6. All images used are for illustrative purposes only and do not represent the actual size, features, specifications, fittings, and furnishings. 7. The developer reserves the right to make revisions / alterations, at it's absolute discretion, without any liability whatsoever.

Pier Point 1

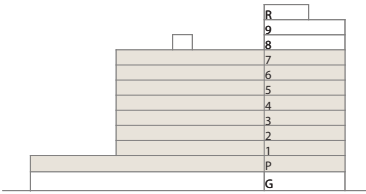
RASHID YACHTS & MARINA

2 BEDROOM

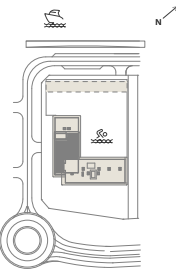
TYPE A.3
UNITS P05, 108, 208-708

SUITE AREA	1085.54 SQ.FT	100.85 SQ.M
BALCONY AREA	197.95 SQ.FT	18.39 SQ.M
TOTAL AREA	1283.49 SQ.FT	119.24 SQ.M

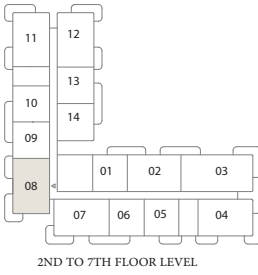
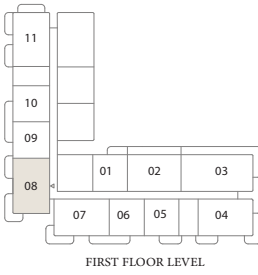
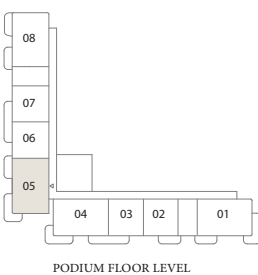
KEY SECTION



LAYOUT



KEY PLAN



Pier Point 1

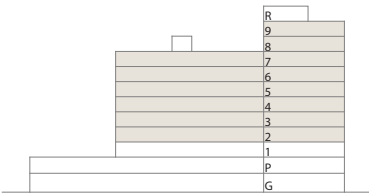
RASHID YACHTS & MARINA

2 BEDROOM

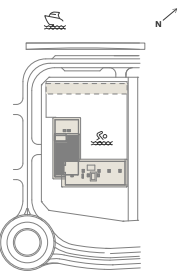
TYPE B.1
UNITS 202-702, 802-902

SUITE AREA	1074.78-1076.07 SQ.FT	99.85-99.97 SQ.M
BALCONY AREA	137.46-140.36 SQ.FT	12.77-13.04 SQ.M
TOTAL AREA	1212.55-1215.14 SQ.FT	112.65-112.89 SQ.M

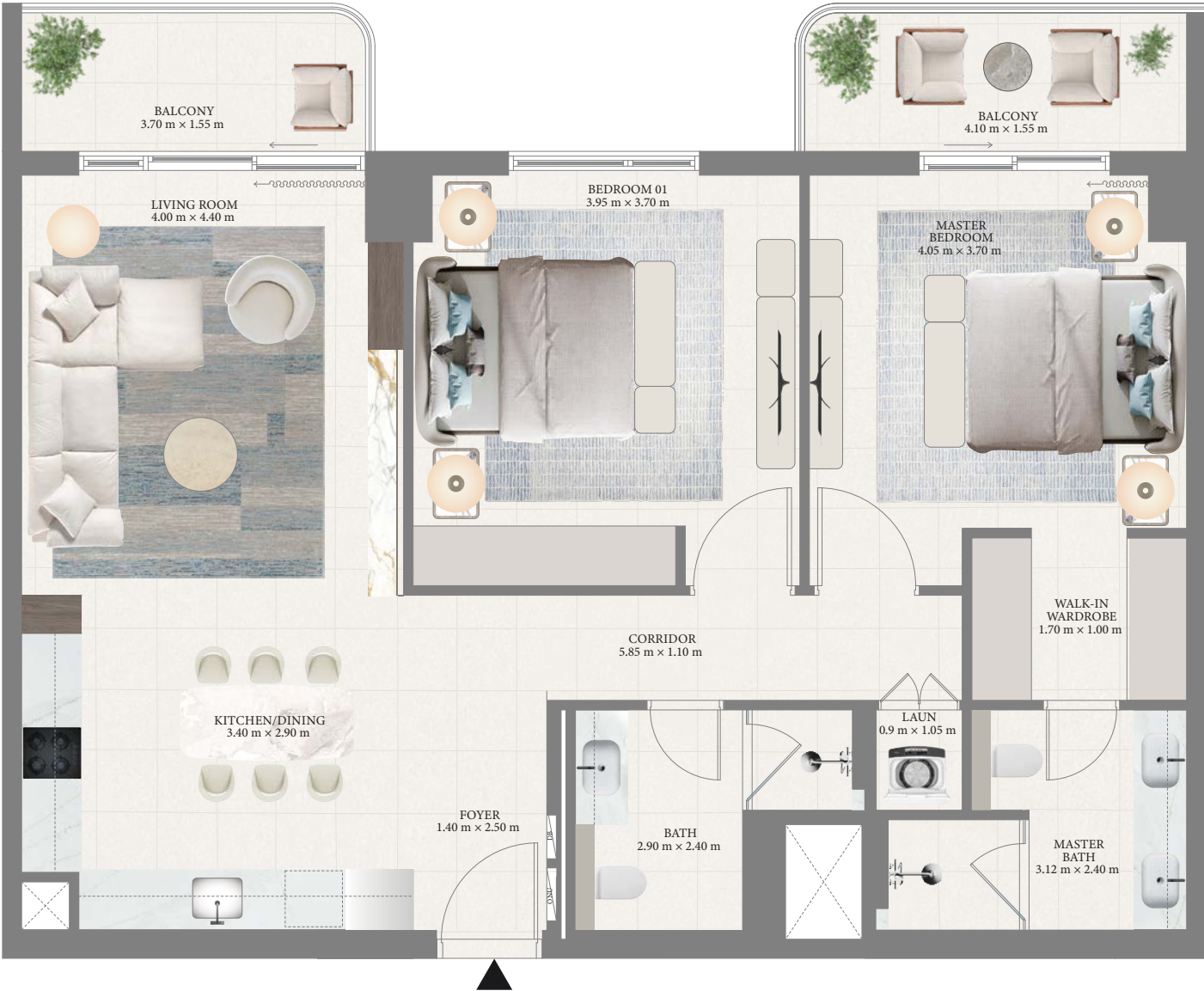
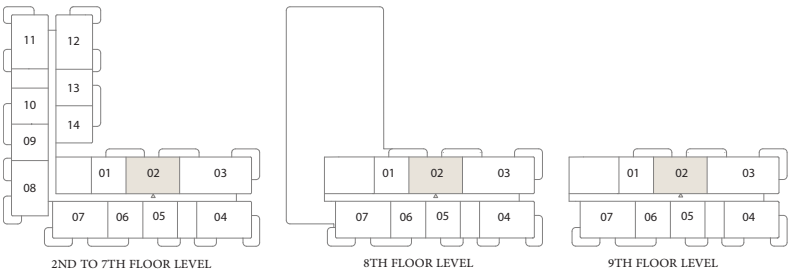
KEY SECTION



LAYOUT



KEY PLAN



Pier Point 1

RASHID YACHTS & MARINA

2 BEDROOM

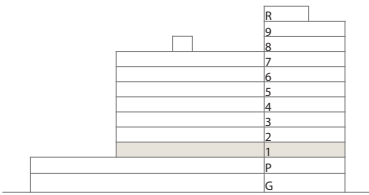
TYPE B.2
UNIT 102

SUITE AREA 1076.07 SQ.FT 99.97 SQ.M

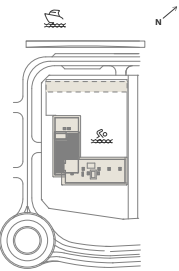
BALCONY AREA 276.96 SQ.FT 25.73 SQ.M

TOTAL AREA 1353.02 SQ.FT 125.7 SQ.M

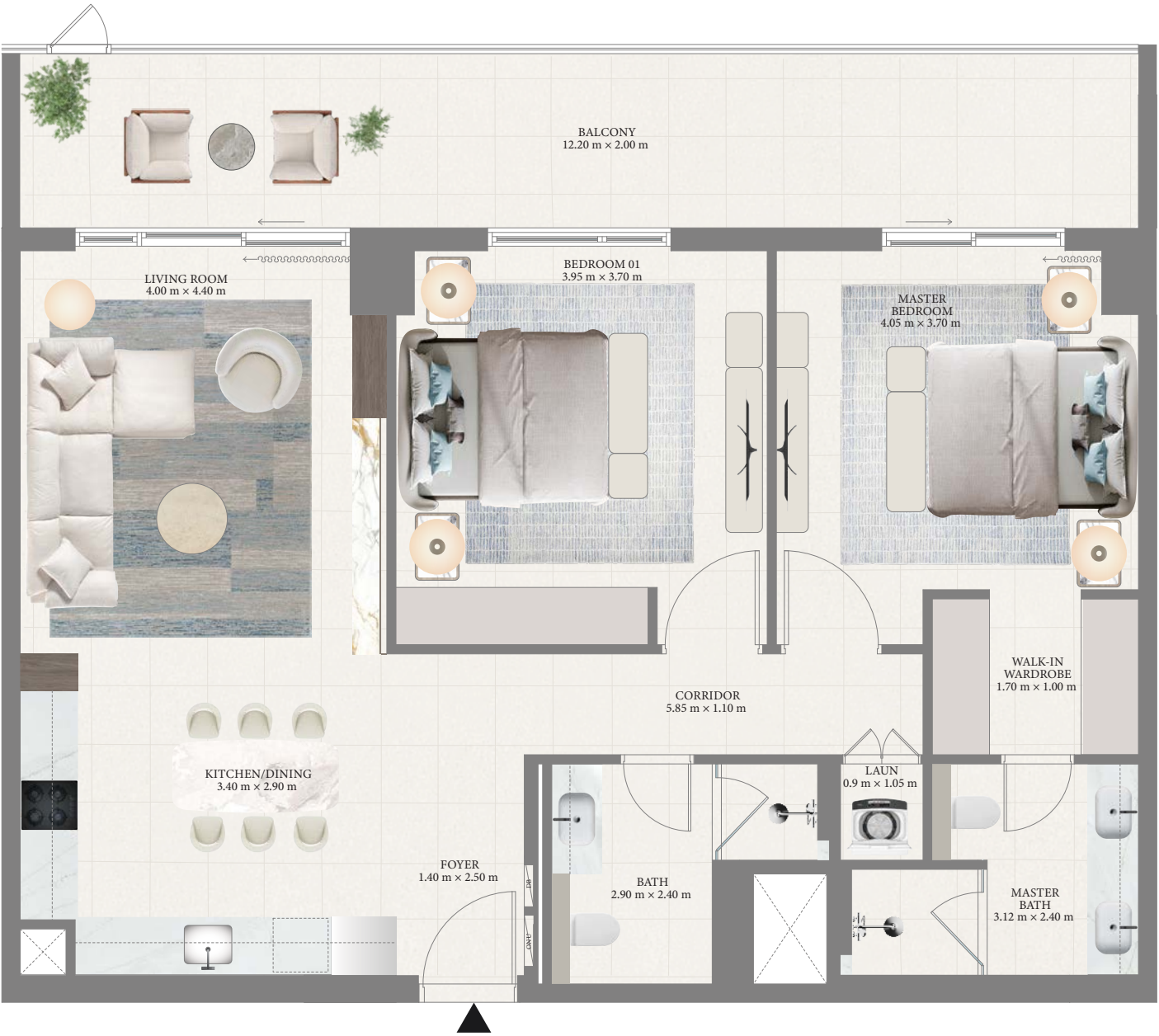
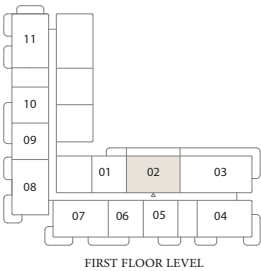
KEY SECTION



LAYOUT



KEY PLAN



FLOOR PLAN 1. All dimensions are in imperial and metric, and measured from finish to finish excluding construction tolerances. 2. All materials, dimensions, and drawings are approximate only. 3. Information is subject to change without notice, at developer's absolute discretion. 4. Actual area may vary from the stated area. 5. Drawings not to scale. 6. All images used are for illustrative purposes only and do not represent the actual size, features, specifications, fittings, and furnishings. 7. The developer reserves the right to make revisions / alterations, at it's absolute discretion, without any liability whatsoever.

Pier Point 1

RASHID YACHTS & MARINA

2 BEDROOM

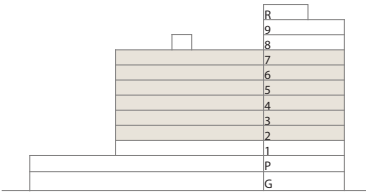
TYPE C.1
UNITS 211-711

SUITE AREA 1086.08 SQ.FT 100.9 SQ.M

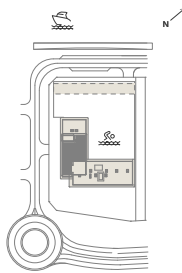
BALCONY AREA 202.36 SQ.FT 18.8 SQ.M

TOTAL AREA 1288.44 SQ.FT 119.7 SQ.M

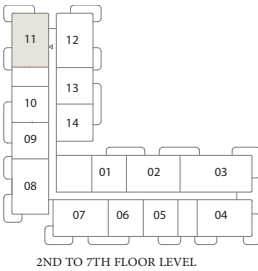
KEY SECTION



LAYOUT



KEY PLAN



FLOOR PLAN 1. All dimensions are in imperial and metric, and measured from finish to finish excluding construction tolerances. 2. All materials, dimensions, and drawings are approximate only. 3. Information is subject to change without notice, at developer's absolute discretion. 4. Actual area may vary from the stated area. 5. Drawings not to scale. 6. All images used are for illustrative purposes only and do not represent the actual size, features, specifications, fittings, and furnishings. 7. The developer reserves the right to make revisions / alterations, at it's absolute discretion, without any liability whatsoever.

Pier Point 1

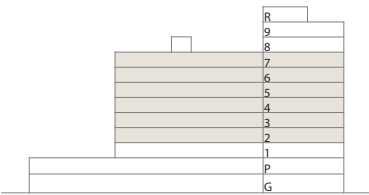
RASHID YACHTS & MARINA

2 BEDROOM

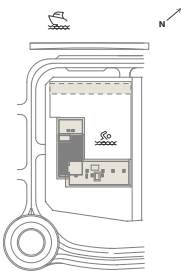
TYPE C.2
UNITS 212-712

SUITE AREA	1077.25 SQ.FT	100.08 SQ.M
BALCONY AREA	202.36 SQ.FT	18.8 SQ.M
TOTAL AREA	1279.61 SQ.FT	118.88 SQ.M

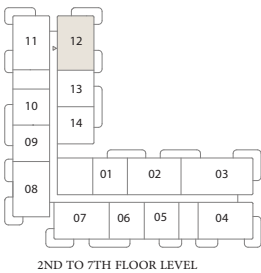
KEY SECTION



LAYOUT



KEY PLAN



FLOOR PLAN 1. All dimensions are in imperial and metric, and measured from finish to finish excluding construction tolerances. 2. All materials, dimensions, and drawings are approximate only. 3. Information is subject to change without notice, at developer's absolute discretion. 4. Actual area may vary from the stated area. 5. Drawings not to scale. 6. All images used are for illustrative purposes only and do not represent the actual size, features, specifications, fittings, and furnishings. 7. The developer reserves the right to make revisions / alterations, at it's absolute discretion, without any liability whatsoever.

Pier Point 1

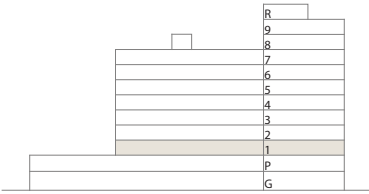
RASHID YACHTS & MARINA

2 BEDROOM

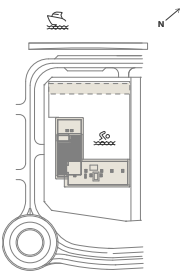
TYPE C.3
UNIT 111

SUITE AREA	1086.19 SQ.FT	100.91 SQ.M
BALCONY AREA	286.75 SQ.FT	26.64 SQ.M
TOTAL AREA	1372.94 SQ.FT	127.55 SQ.M

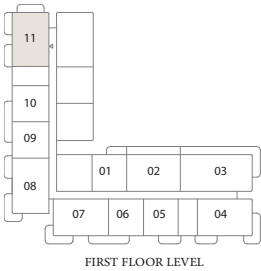
KEY SECTION



LAYOUT



KEY PLAN



FIRST FLOOR LEVEL



Pier Point 1

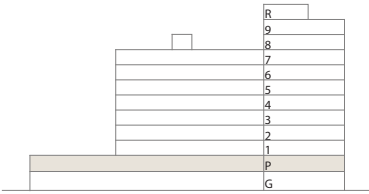
RASHID YACHTS & MARINA

2 BEDROOM

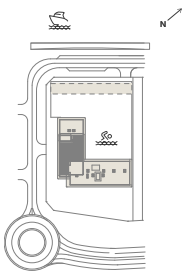
TYPE C.4
UNIT P08

SUITE AREA	1086.08 SQ.FT	100.9 SQ.M
BALCONY AREA	144.56 SQ.FT	13.43 SQ.M
TOTAL AREA	1230.64 SQ.FT	114.33 SQ.M

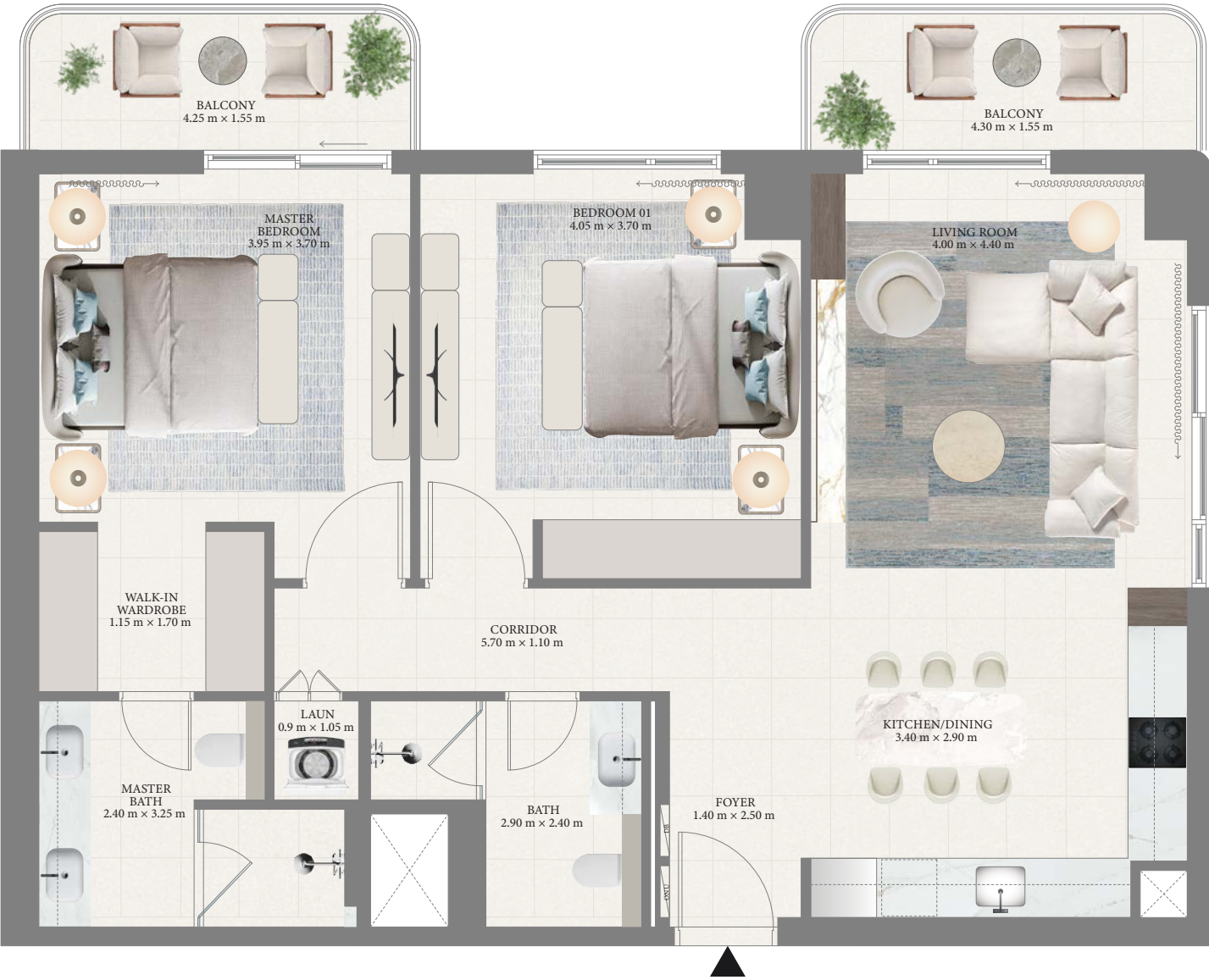
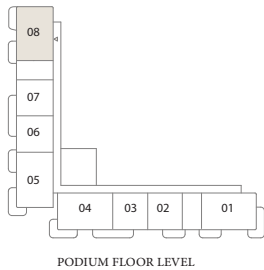
KEY SECTION



LAYOUT



KEY PLAN



FLOOR PLAN 1. All dimensions are in imperial and metric, and measured from finish to finish excluding construction tolerances. 2. All materials, dimensions, and drawings are approximate only. 3. Information is subject to change without notice, at developer's absolute discretion. 4. Actual area may vary from the stated area. 5. Drawings not to scale. 6. All images used are for illustrative purposes only and do not represent the actual size, features, specifications, fittings, and furnishings. 7. The developer reserves the right to make revisions / alterations, at it's absolute discretion, without any liability whatsoever.

Pier Point 1

RASHID YACHTS & MARINA

3 BEDROOM

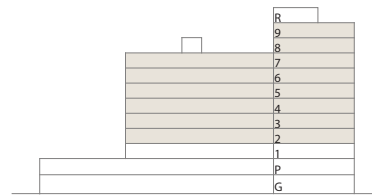
TYPE A.1
UNITS 203-703, 803-903

SUITE AREA 1422.99-1423.53 SQ.FT 132.20-132.25 SQ.M

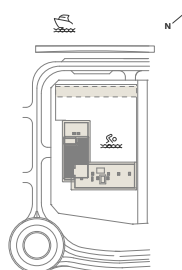
BALCONY AREA 245.85-248.54 SQ.FT 22.84-23.09 SQ.M

TOTAL AREA 1668.84-1671.74 SQ.FT 155.04-155.31 SQ.M

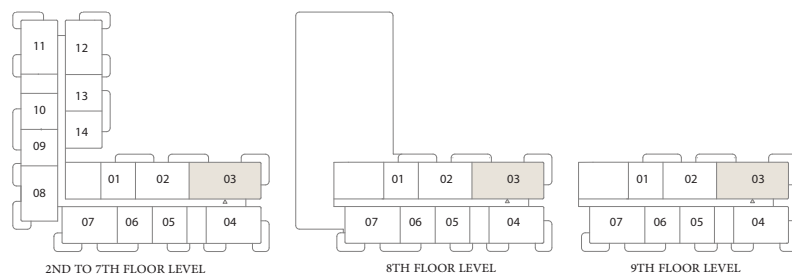
KEY SECTION



LAYOUT



KEY PLAN



FLOOR PLAN 1. All dimensions are in imperial and metric, and measured from finish to finish excluding construction tolerances. 2. All materials, dimensions, and drawings are approximate only. 3. Information is subject to change without notice, at developer's absolute discretion. 4. Actual area may vary from the stated area. 5. Drawings not to scale. 6. All images used are for illustrative purposes only and do not represent the actual size, features, specifications, fittings, and furnishings. 7. The developer reserves the right to make revisions / alterations, at it's absolute discretion, without any liability whatsoever.

EMAAR

Pier Point 1

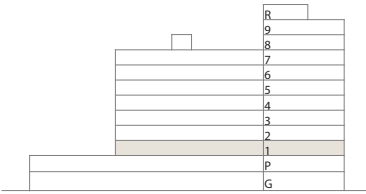
RASHID YACHTS & MARINA

3 BEDROOM

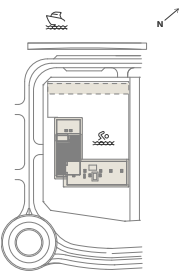
TYPE A.2
UNIT 103

SUITE AREA	1423.53 SQ.FT	132.25 SQ.M
BALCONY AREA	483.51 SQ.FT	44.92 SQ.M
TOTAL AREA	1907.04 SQ.FT	177.17 SQ.M

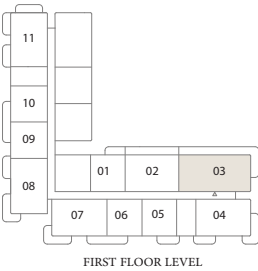
KEY SECTION



LAYOUT



KEY PLAN



FLOOR PLAN 1. All dimensions are in imperial and metric, and measured from finish to finish excluding construction tolerances. 2. All materials, dimensions, and drawings are approximate only. 3. Information is subject to change without notice, at developer's absolute discretion. 4. Actual area may vary from the stated area. 5. Drawings not to scale. 6. All images used are for illustrative purposes only and do not represent the actual size, features, specifications, fittings, and furnishings. 7. The developer reserves the right to make revisions / alterations, at it's absolute discretion, without any liability whatsoever.

Pier Point 1

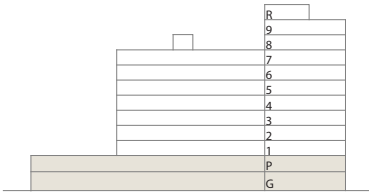
RASHID YACHTS & MARINA

TOWNHOUSE

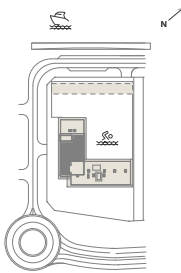
TYPE A.1
UNITS TH02 & TH04

SUITE AREA	2199.82 SQ.FT	204.37 SQ.M
BALCONY AREA	467.37 SQ.FT	43.42 SQ.M
TOTAL AREA	2667.19 SQ.FT	247.79 SQ.M

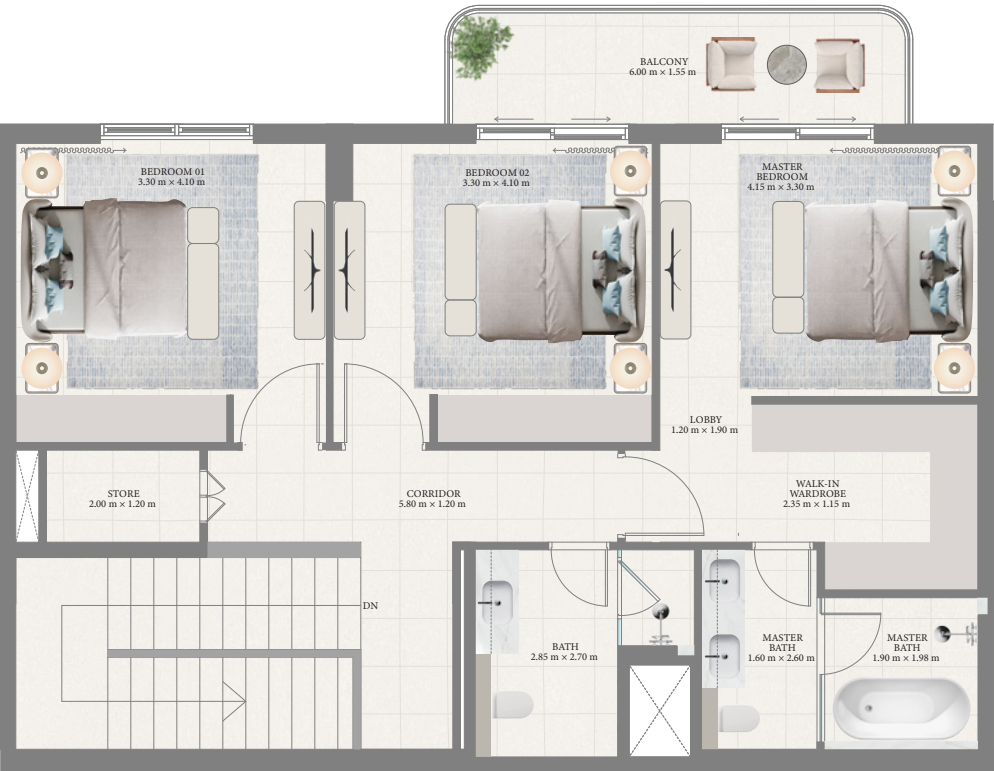
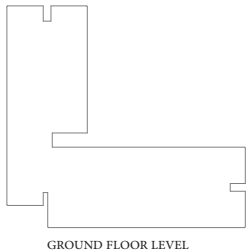
KEY SECTION



LAYOUT



KEY PLAN



UPPER LEVEL



LOWER LEVEL

FLOOR PLAN 1. All dimensions are in imperial and metric, and measured from finish to finish excluding construction tolerances. 2. All materials, dimensions, and drawings are approximate only. 3. Information is subject to change without notice, at developer's absolute discretion. 4. Actual area may vary from the stated area. 5. Drawings not to scale. 6. All images used are for illustrative purposes only and do not represent the actual size, features, specifications, fittings, and furnishings. 7. The developer reserves the right to make revisions / alterations, at it's absolute discretion, without any liability whatsoever.

Pier Point 1

RASHID YACHTS & MARINA

TOWNHOUSE

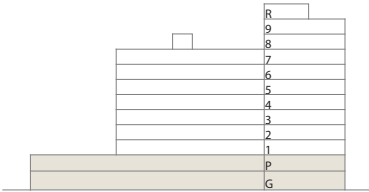
TYPE A.2
UNITS TH01 & TH05

SUITE AREA 2199.82-2199.93 SQ.FT 204.37-204.38 SQ.M

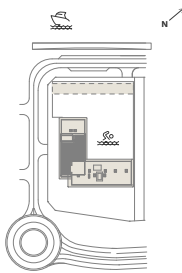
BALCONY AREA 443.58-450.04 SQ.FT 41.21-41.81 SQ.M

TOTAL AREA 2643.40-2649.97 SQ.FT 245.58-246.19 SQ.M

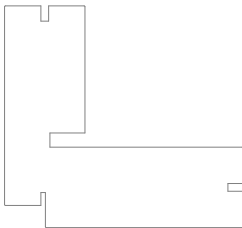
KEY SECTION



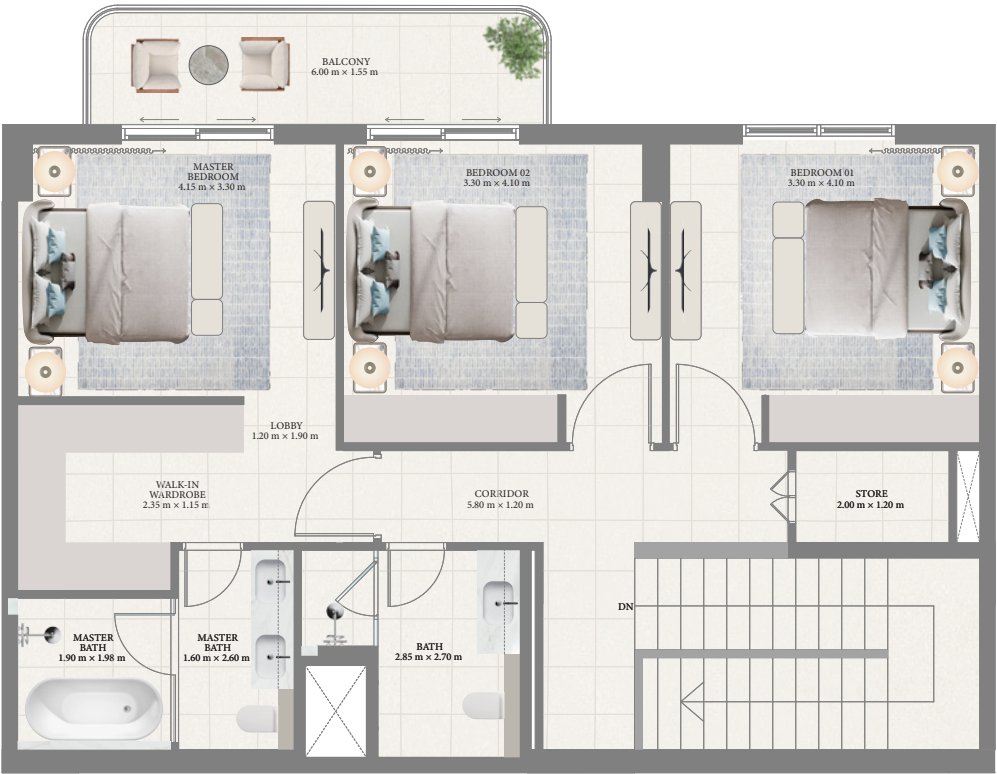
LAYOUT



KEY PLAN



GROUND FLOOR LEVEL



UPPER LEVEL



LOWER LEVEL

FLOOR PLAN 1. All dimensions are in imperial and metric, and measured from finish to finish excluding construction tolerances. 2. All materials, dimensions, and drawings are approximate only. 3. Information is subject to change without notice, at developer's absolute discretion. 4. Actual area may vary from the stated area. 5. Drawings not to scale. 6. All images used are for illustrative purposes only and do not represent the actual size, features, specifications, fittings, and furnishings. 7. The developer reserves the right to make revisions / alterations, at it's absolute discretion, without any liability whatsoever.

Pier Point 1

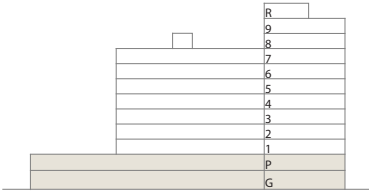
RASHID YACHTS & MARINA

TOWNHOUSE

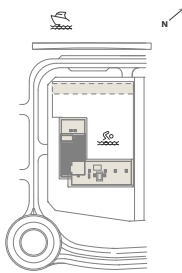
TYPE A.3
UNIT TH03

SUITE AREA	2199.82 SQ.FT	204.37 SQ.M
BALCONY AREA	467.37 SQ.FT	43.42 SQ.M
TOTAL AREA	2667.19 SQ.FT	247.79 SQ.M

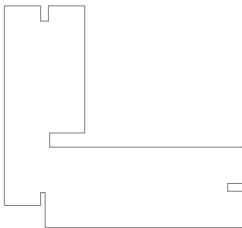
KEY SECTION



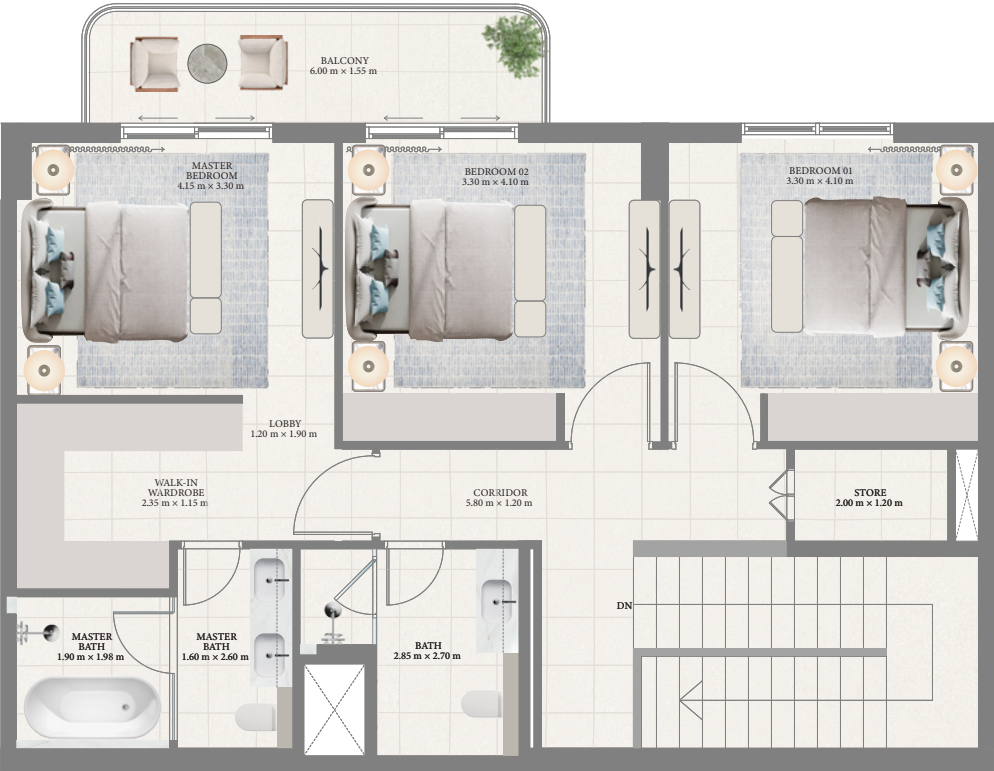
LAYOUT



KEY PLAN



GROUND FLOOR LEVEL



UPPER LEVEL



LOWER LEVEL

FLOOR PLAN 1. All dimensions are in imperial and metric, and measured from finish to finish excluding construction tolerances. 2. All materials, dimensions, and drawings are approximate only. 3. Information is subject to change without notice, at developer's absolute discretion. 4. Actual area may vary from the stated area. 5. Drawings not to scale. 6. All images used are for illustrative purposes only and do not represent the actual size, features, specifications, fittings, and furnishings. 7. The developer reserves the right to make revisions / alterations, at it's absolute discretion, without any liability whatsoever.

Pier Point^R

ASHID YACHTS & MARINA

FOR MORE INFORMATION PLEASE CONTACT

AFS
REAL ESTATE
STAY AHEAD, INVEST SMART

📞 +971 55 476 7630
☎️ +971 4 368 7878
✉️ info@afsrealestate.com
🌐 www.afsrealestate.com

db
DUBRICKS
POSSIBILITIES ARE LIMITLESS

📞 +971 50 674 2020
☎️ +971 4 368 7878
✉️ info@dubricks.com
🌐 www.dubricks.com

EMAAR